



## MUSCOGEE COUNTY SCHOOL DISTRICT DIVISION OF TECHNOLOGY SERVICES

Prepared by: ITS/CSC

Date: 02/23/2008

### Title: How to Install Integrate at Home

This self help document is designed to help you install the Integrate software on your home computer.

### Installing InteGrade 9.4 Home from the MCSD site

**NOTE:** YOUR HOME COMPUTER MUST BE CONNECTED TO THE INTERNET TO USE THIS PROGRAM.

- 1 - Open Internet Explorer
- 2 - In the address bar, type [www.mcsdga.net](http://www.mcsdga.net)
- 3 - On the upper right hand side of the screen, Click "Site Index".
- 4 - Scroll down. Under the "Division of Technology Services" and "Customer Support Services", click on "**Customer Support Center**".  
In the middle column click "Self – help Information, Instructional".
- 5 – Click on "Installing InteGrade at Home"

- 6 – Click the link appropriate for your level

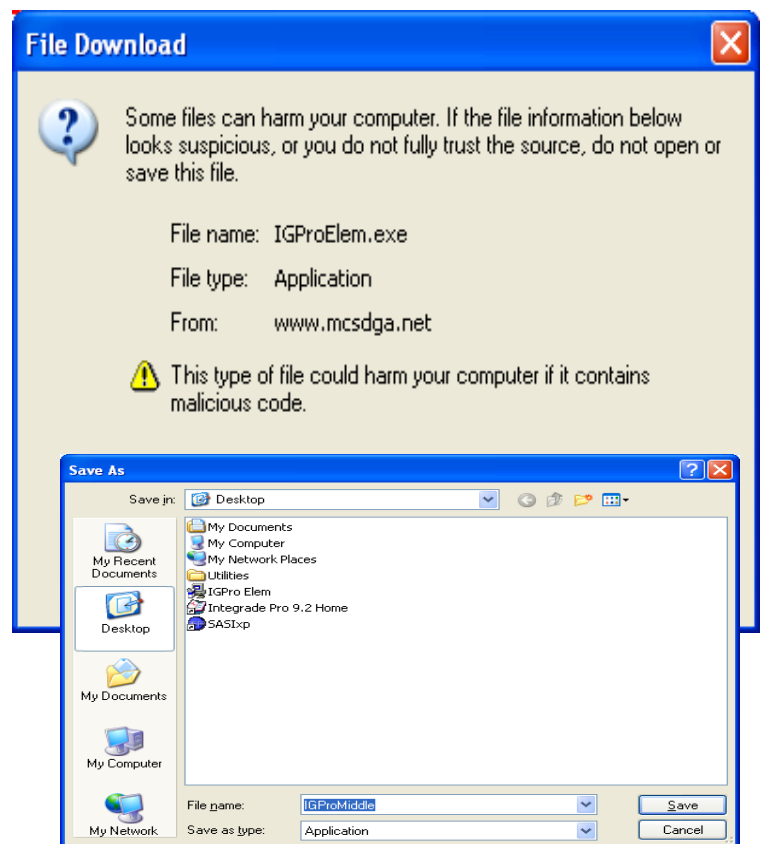
[Elementary School InteGrade File](#)

[Middle School InteGrade File](#)

[High School InteGrade File](#)

- 7 – Click Save

- 8 - Navigate to the desktop; click Save.



9 – When it is finished downloading, click “Close”.

10 – Minimize all windows and look on your desktop for the file.

11 – Double click on the file

12 - Click Next.

13 - Click Next.

14 - Click Start - Wait for the Installation.

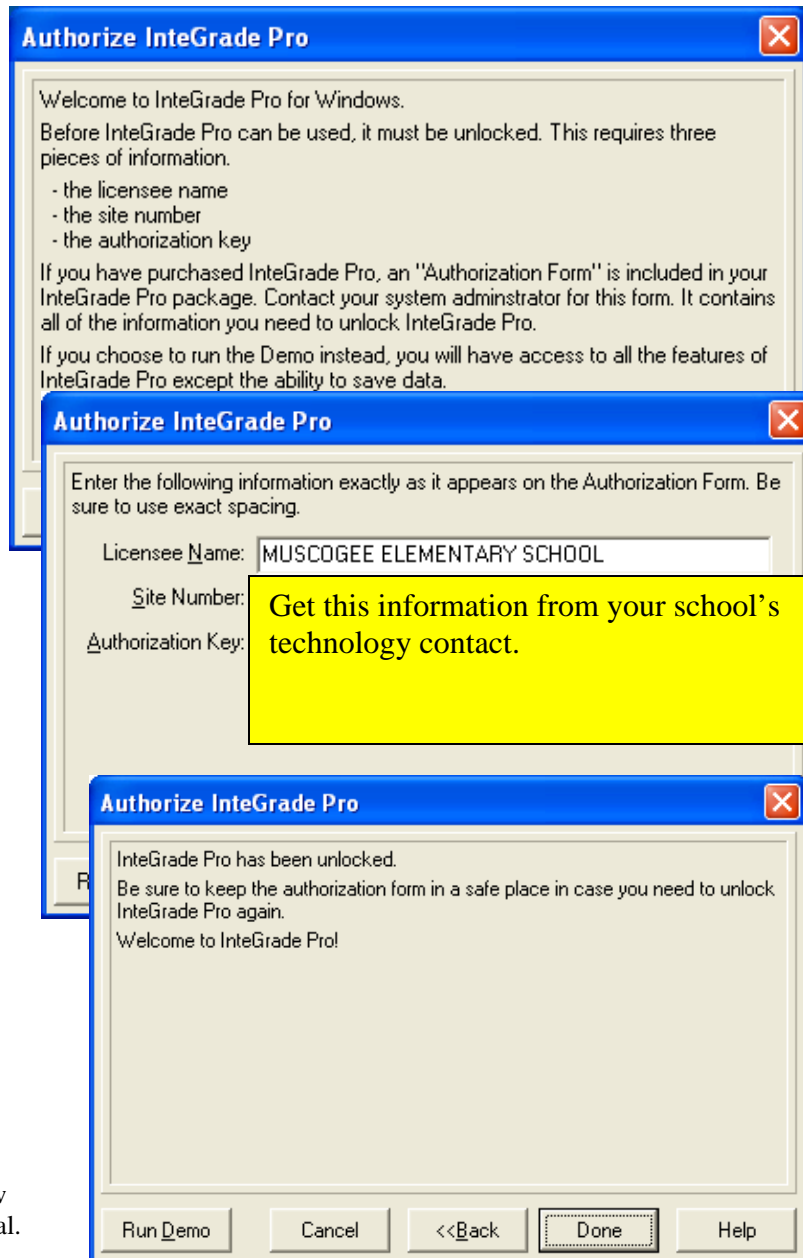
15 - Click Next – EXIT.



16 - Double click the InteGrade Pro 9.4 home icon on your desktop.

InteGrade Pro 9.4.Ink

17 - Click Next.



18 - Type license information exactly how it is listed.

19 - Click Next.

20 - Click Done.

20 - InteGrade should now launch. Login as usual.