



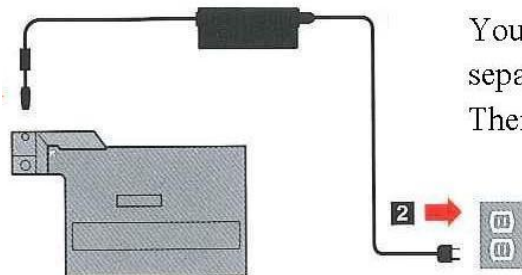
MUSCOGEE COUNTY SCHOOL DISTRICT DIVISION OF TECHNOLOGY SERVICES

Prepared by: ITS
Date: 09/15/09

Title: How to Dock and Un-Dock Your Laptop

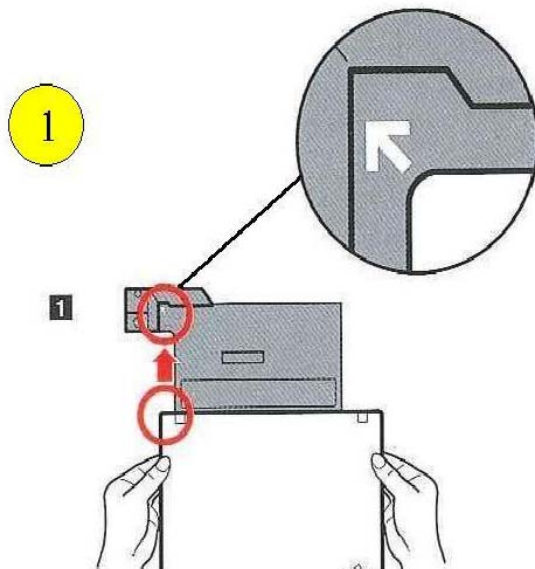
This self help document is designed to help you dock and un-dock your laptop from your port replicator.

This step should be done by the installers.

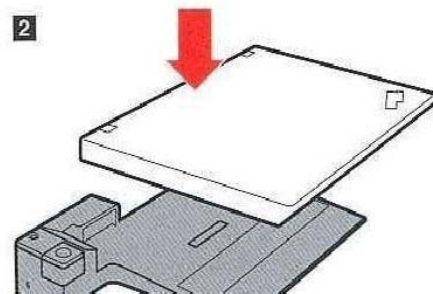


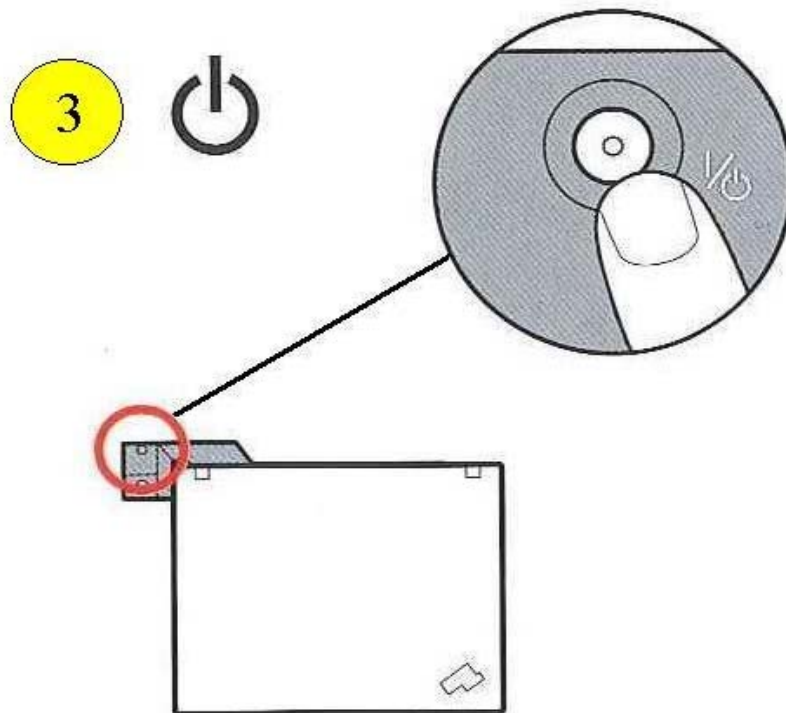
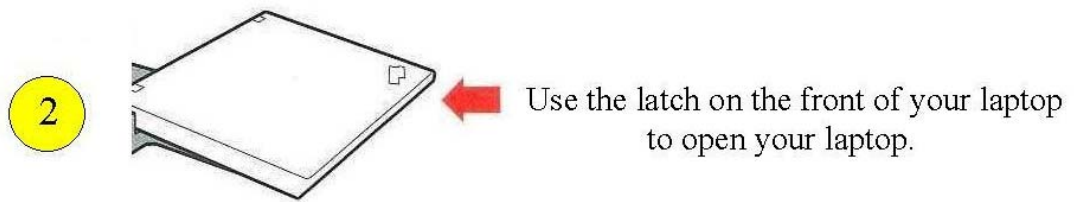
Your port replicator has its own power cord, separate from your laptop power cord. There is no need to unplug this cord.

To dock your laptop, first make sure the laptop is closed. Then, align the upper-left corner of your laptop with the arrow on the port replicator as show.



Make sure your laptop is fully seated. You should hear a “click”.



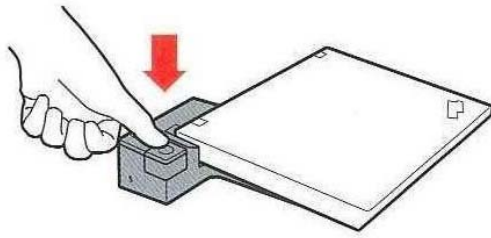


Press the power button on the port replicator.

4 Your laptop is ready to use!

To un-dock your laptop first shut down Windows and close the laptop.
Then,...

1



2

